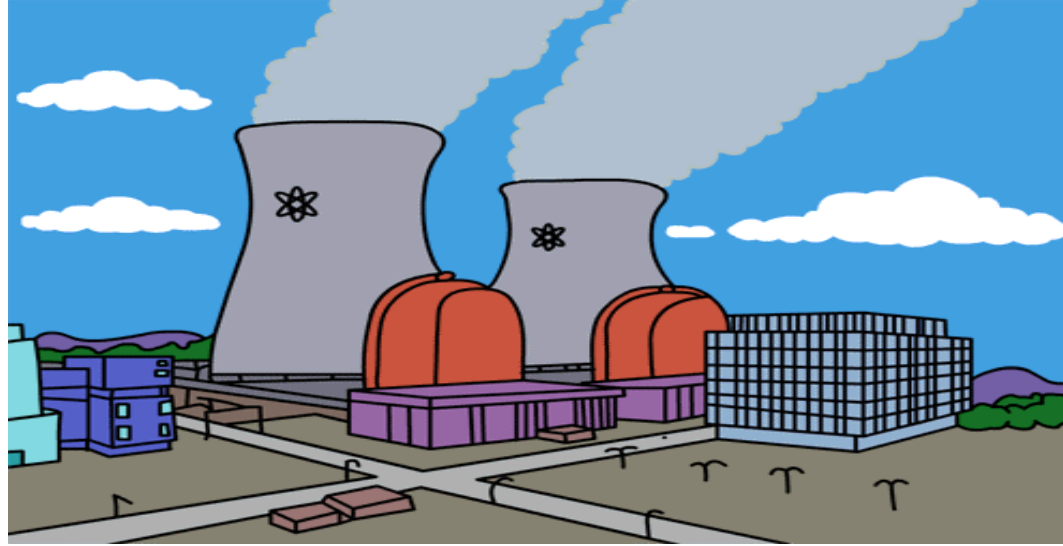


ETT is a Biofilm Engine

ETT is a biofilm reactor enhancing
up-regulation to biofilm phenotype (P^{BF}) and
changing ratio to planktonic phenotype (P^P)

$$\frac{p^{BF}}{p^P}$$



Biofilm Reactors: Chronic Wounds /Gauze

The Covered Wound Bed is a Static Biofilm Reactor

Influenced by Eh and pH via Perfusion,

Enhancing Up Regulation to

Recalcitrant Biofilm Phenotype (P^{BF})

And changing Ratio from Planktonic Phenotype (P^P) in

Chronic Wounds

$$\text{Planktonic Predominate } \leq 1 \quad \frac{P^{BF}}{P^P} \quad \geq 1 \text{ Biofilm Predominate}$$

(Susceptible) (Recalcitrant)